

SY225C-10HD



SANY

# NEW GENERATION ENERGY EFFICIENT EXCAVATOR

CONSISTENT • VERSATILE • EFFICIENT



DIRECT POWER CONTROL  
TECHNOLOGY

Operating Weight: 22,550 kg

Engine Power: 158 HP (118 kW)/ 2000 rpm

Bucket Capacity: 1.2m<sup>3</sup> GP

# SPECIFICATIONS

# SY225C-10HD GENE

ENGINE	
Model	Mitsubishi FUSO 4M50
Type	4 Cylinder, Electronic Injection, CRDI
Rated Engine Power	158HP(118kW)@2000rpm
Max. Torque	580Nm@1600rpm
Displacement	4.9L
Battery	2X12V

CONTROL SYSTEM	
Control System	Direct Power Control System, Posicon Hydraulic System Control
Work modes	H, S, L, B, C1, C2, C3

HYDRAULIC SYSTEM	
Main Pumps	2 Variable Displacement Axial Piston Pumps
Max. Flow	2 X 260 lpm
Pilot Pump	1 Gear Pump

RELIEF VALVE SETTINGS	
Implement Circuit (Power Boost)	34.3 MPa (37.0 MPa)
Swing Circuit	29.4 MPa
Travel Circuit	34.3 MPa
Pilot Circuit	3.9 MPa

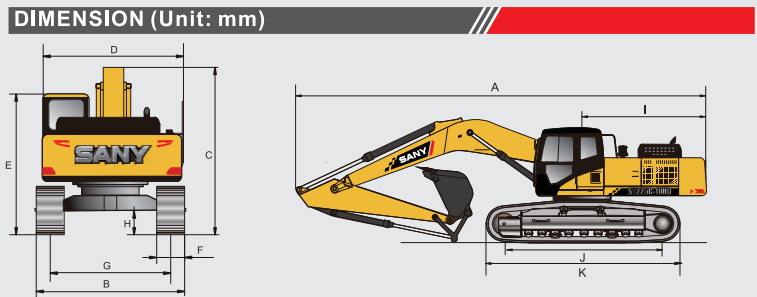
SWING SYSTEM	
Swing Motor	Axial Piston Motor
Parking Brake	Oil Disc Brake, Hyd. Operated Automatically
Swing Speed	11 rpm

TRAVEL SYSTEM	
Travel Motors	2 x Axial piston, Two Speed Motors
Parking Brakes	Oil Disc Brake Per Motor
Max. Travel Speed (L/H)	3.3/5.4 Kmph
Max. Traction Force	209 kN
Grade Ability	70°(35%)
Ground Pressure	47.3 kPa

UNDERCARRIAGE & WORKING DEVICE	
Track Shoes (Each side)	47
Upper Roller (Each side)	2
Lower Roller (Each side)	8
Track Guard(each Side)	2
Std. Track	600 mm HD (12 mm Thickness)
Std. Boom	5700 mm
Std. Arm	2400 mm (2900 mm Option)
Std. Bucket	1.2 m <sup>3</sup> GP

SERVICE REFILL CAPACITIES	
Hydraulic Tank	239 L
Fuel Tank	340 L
Engine Oil	22 L
Radiator	29 L
Swing Device	4 L
Travel Device	2 X 5.5 L

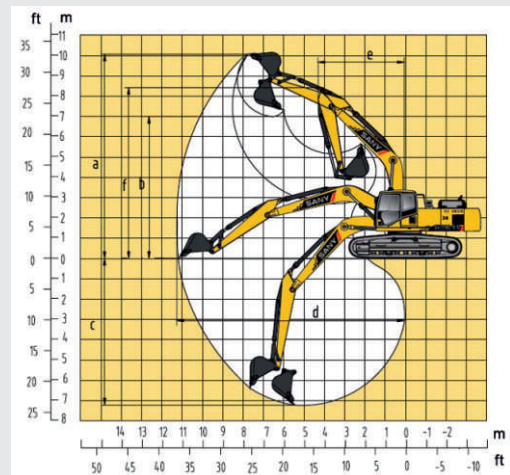
CAB & CONTROL	
<b>Cab</b>	
Auto Climate Control Air Conditioning System, Fully Adjustable Suspension Seat, Front & Top Guard as std.	
<b>Control</b>	
10" Flat Panel Screen Touch Intelligent Display	
Customize Work Mode Selection With Flow Priority System	
Keyless Engine Ignition Switch On Right Console	



DIMENSION (Unit: mm)	Arm 2400	Arm 2900
A. Overall Length	9575	9680
B. Overall Width	2980	2980
C. Overall Height	2955	3440
D. Upper Width	2785	2875
E. Overall Height of Cab	3075	3075
F. Std. Track Shoe Width	600	600
G. Track Gauge	2380	2380
H. Min. Ground Clearance	465	465
I. Rear-end Swing Radius	2900	2900
J. Distance between Tumbles	3445	3445
K. Under Carriage Length	4250	4250

DIGGING FORCES	
Max. Bucket Digging Force	152 kN
Max. Arm Crowding Force	138 kN

## WORKING RANGE



WORKING RANGE	Arm 2400	Arm 2900
a. Max. Cutting Height	9113	9600
b. Max. Dumping Height	6252	6730
c. Max. Digging Depth	6037	6600
d. Max. Digging Reach	9312	10280
e. Min. Swing Radius	3730	3730
f. Max. Height at Min. Swing Radius	7680	7680

BUCKET				
Capacity	Width (mm)	Weight (Kg)	Arm Length	
			2.4	2.9
1.2 m <sup>3</sup> GP-Std.	1351	850	✓	✓
1.0 m <sup>3</sup> HD-Opt.	1201	781	✓	✓
1.6 m <sup>3</sup> COAL-Opt.	1740	900	✓	✓

## SANY HEAVY INDUSTRY INDIA PVT. LTD

### HEAD OFFICE

Address : Plot No. E-4, Chakan Industrial Area Phase-III,  
Village Kuruli, Taluka Khed, District Pune - 410501,  
Maharashtra, INDIA.

E-mail : [customercare@sany.in](mailto:customercare@sany.in)

Website : [www.sany.in](http://www.sany.in)

**Toll Free No.: 1800-209-3337**

